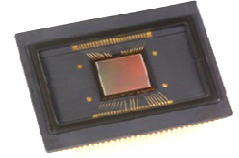


RJ32S4AF0DT

2/3-type B/W Progressive Scan CCD Area Sensor with 5M Pixels (4ch)
 High Speed and High Sensitivity including near-infrared light region(30frames/s @60MHz)



Description

The RJ32S4AF0DT is a 2/3-type(11.011mm) solid-state image sensor that consists of PN photo-diodes and CCDs(charge-coupled devices) with approximately 5M pixels.
 The sensor provides a stable high-resolution B/W image and high sensitivity and high efficiency and high speed (30frames/s @60MHz).

Applications

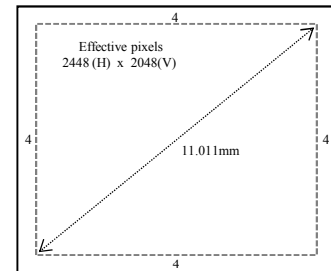
- Industrial monitor cameras
- Intelligent Transport System cameras
- Video capturing devices for PCs etc.

Features

- | | |
|---------------------------------|---|
| • Number of image pixels | 2456H × 2056V |
| • Sensitivity | 870mV @F4 1000lx with a 90% reflector, 1/30s accumulation |
| • Smear ratio | -110dB |
| • Frame rate | 30frames/s @60MHz |
| • Signal Output | 4ch |
| • Color filter | B/W |
| • Supply Voltages | +13.5V/+3.3V/-6.5V |
| • Ambient operating temperature | -30 °C to +85 °C |
| • Package | 64pinDIP(plastic) |

ARRANGEMENT OF PIXELS

Image pixels 2456 (H) x 2056 (V)



System Configuration

